

Mating Calls



Male adult cicadas sing mating songs and females respond flicking their wings

Mate



A male and female cicada mate

Lay eggs



The female lays eggs in a groove she has etched in the bark of a tree limb

Molt Nymph Exoskeleton



On the nearest vertical surface, nymphs molt into the winged adult form

Cicada Lifecycle

Nymphs hatch

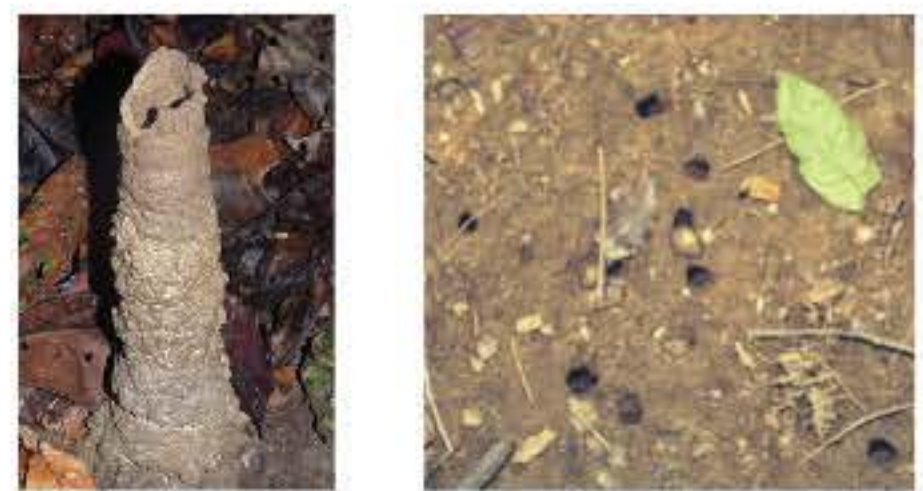
Cicada nymphs hatch from the eggs, briefly feed on sap then drop from the tree to the ground and dig down

Nymphs tunnel & feed



Nymphs tunnel underground looking for and feeding on plant roots; they spend 2-17 years doing this depending on species

Nymphs Emerge



Using internal clocks and thermometers, nymphs emerge from the ground